



PROUDLY HANDMADE IN ITALY  
SINCE 1910

## COLORE CERÁMICA • CERAMIC COLOURS • COLORES PARA CERÁMICA

**Bianco** • White • Blanco

**Nero** • Black • Negro

**Colori Speciali** • Special Colors • Colores especiales


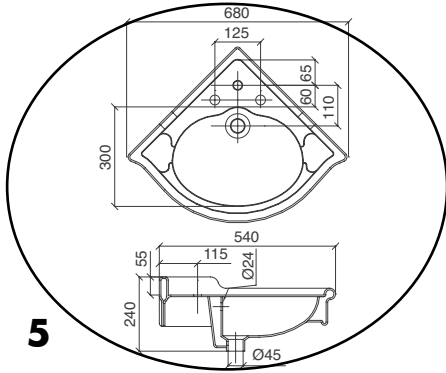
## ISTRUZIONI PER L'UTILIZZO DEL LISTINO

### HOW TO USE THIS PRICE LIST • INSTRUCCIONES PARA EL USO DE LA LISTA DE PRECIOS

#### Esempio ordine: Lavabo angolare con alzatina in cerámica bianca

Example of order: Angular small washbasin with backboard, white colour

Ejemplo de pedido: Lavabo angular con respaldo, cerámica blanca

|          |  | Cod.     |                             |          |  |
|----------|--|----------|-----------------------------|----------|--|
| <b>1</b> |    | <b>3</b> | 7050<br>bianco_white_bianco | <b>4</b> | <b>5</b>   |
|          | <p>Lavabo angolare con alzatina<br/>1-3 fori rubinetteria<br/>Angular small washbasin with<br/>backboard 1-3 tap holes<br/>Lavabo angular con respaldo<br/>1-3 orificios</p> |          |                             |          |  |

#### 1) Immagine del prodotto

Image of product • Imagen del producto

#### 2) Descrizione prodotto

Product description • Descripción producto

#### 3) Codice e finitura del prodotto

Code and product finish • Código y acabado del producto

#### 4) Prezzo del prodotto

Product price • Precio del producto

#### 5) Caratteristiche tecniche

Technical features • Características técnicas

## NOTE GENERALI • GENERAL INFORMATION • INFORMACIONES GENERALES

### FORI RUBINETTERIA

I nostri lavabi possono essere ordinati con 1 o 3 fori aperti. Si prega di specificare sempre in fase di ordine il numero di fori aperti richiesto. La variante 2 fori è disponibile su richiesta ma comporta tempi di consegna diversi da quelli standard. I nostri bidet possono essere ordinati con 1 o 3 fori aperti. Si prega di specificare sempre in fase di ordine il numero di fori aperti richiesto. L'azienda non si riterrà responsabile né vincolata a sostituire lavabi o bidet per eventuali danni qualora sia il cliente ad aver aperto autonomamente i fori dei prodotti.

### COLORAZIONI SPECIALI

Su richiesta siamo in grado di produrre sanitari in colorazioni speciali (prezzi disponibili su richiesta).

### TOLLERANZA

Seguono i range di tolleranza per i prodotti ceramici:

- PER ARTICOLI AVENTI DIMENSIONI MAGGIORI DI 750 MM SI CONSIDERA UNA TOLLERANZA DI +/- 5%
- PER ARTICOLI AVENTI DIMENSIONI INFERIORI A 750 MM SI CONSIDERA UNA TOLLERANZA DI +/- 3%

Tutti i nostri prodotti sono confezionati in scatole personalizzate realizzate in materiale interamente riciclabile.

### CONSIGLI PER LA PULIZIA

Una corretta pulizia può garantire la lunga durata del vostro sanitario. Si consiglia di utilizzare detergenti cremosi non abrasivi e non aggressivi che potrebbero compromettere lo smalto del sanitario. Applicare utilizzando una spugna umida e risciacquare abbondantemente.

## *HOLES FOR TAPS AND FITTINGS*

*Our basins can be ordered with 1 or 3 open tap holes. At the time of the order, customers should always specify the desired number of open holes. Basins with 2 holes are also available on request, but have different delivery times from the standard ones.*

*Bidets can be ordered with 1 or 3 open tap holes. At the time of the order, customers should always specify the desired number of open holes. The company shall not be responsible or obliged to replace sinks or bidets due to damages caused by holes being directly drilled by the customer.*

## *FINISHING IN PARTICULAR COLOURS*

*On request, we are also able to supply sanitary fittings in specific colours (prices are available on request).*

## *TOLERANCE*

*Below are the tolerance ranges for china products:*

- *THE TOLERANCE FOR PRODUCTS WITH DIMENSIONS ABOVE 750 MM IS +/- 5%*
- *THE TOLERANCE FOR PRODUCTS WITH DIMENSIONS BELOW 750 MM IS +/- 3%*

*All our products are packaged in custom boxes made of entirely recyclable material.*

## *CLEANING SUGGESTIONS*

*An appropriate cleaning can enhance the life of your sanitary fitting. We advise to use non-abrasive and aggressive cream detergents to avoid damaging the enamel. Apply the detergent with a soft sponge and rinse with plenty of water.*

## *ORIFICIOS GRIFERÍA*

*Nuestros lavabos pueden ser pedidos con 1 o 3 orificios abiertos. Se ruega que se especifique siempre en fase de pedido el número de orificios abiertos solicitado. La variante 2 orificios está disponible si solicitado pero implica tiempos de entrega diversos de los estándares.*

*Nuestros bidé pueden ser pedidos con 1 o 3 orificios abiertos. Se ruega que se especifique siempre en fase de pedido el número de orificios abiertos solicitado. La empresa no se considerará responsable ni vinculada a sustituir lavabos o bidé por eventuales daños en el caso que el cliente haya procedido a abrir autónomamente los orificios de los productos.*

## *COLORACIONES ESPECIALES*

*Si se nos solicita estamos en grado de producir sanitarios en coloraciones especiales (precios disponibles si solicitado).*

## *TOLERANCIA*

*Seguidamente indicamos los márgenes de tolerancia para los productos cerámicos:*

- *PARA ARTÍCULOS QUE TIENEN DIMENSIONES MAYORES DE 750 MM SE CONSIDERA UNA TOLERANCIA DE +/- 5%*
- *PARA ARTÍCULOS QUE TIENEN DIMENSIONES INFERIORES A 750 MM SE CONSIDERA UNA TOLERANCIA DE +/- 3%*

*Todos nuestros productos están confeccionados en cajas personalizadas realizadas con material que puede ser completamente reciclado.*

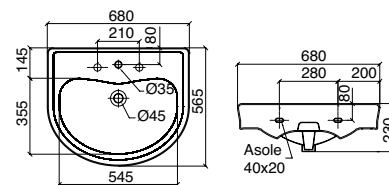
## *CONSEJOS PARA LA LIMPIEZA*

*Una correcta limpieza puede garantizar la larga duración de su sanitario. Aconsejamos que se utilicen detergentes cremosos no abrasivos y no agresivos que podrían arruinar el esmalte del sanitario. Aplicar utilizando una esponja blanda humedecida y enjuagar abundantemente.*



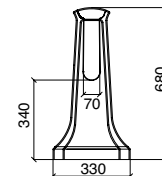
Lavabo con bordo paraspruzzi  
1-3 fori rubinetteria - 680mm  
*Washbasin with splash plate  
1-3 tap holes - 680mm*  
Lavabo 1-3 orificios - 680mm

**5369/1**  
bianco *white* / blanco  
monoforo *single tap hole*  
\_un orificio  
**5369/3**  
bianco *white* / blanco  
tre fori *three tap holes*  
\_tres orificios



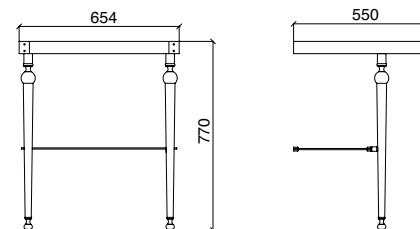
Colonna per lavabo  
*Pedestal for washbasin*  
Pedestal para lavabos

**5771**  
bianco *white* / blanco



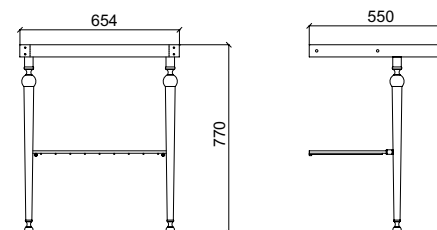
Struttura metallica per lavabo 5369  
con ripiano in vetro  
*Metal stand with glass shelf  
for washbasin 5369*  
Soporte metalico para lavabo 5369  
con estante en vidrio

**M5369CR**  
cromo *chrome* / cromo  
**M5369BR**  
bronzo *bronze* / bronce  
**M5369NI**  
nichel *nickel* / niquel  
**M5369OL**  
oro *light english gold*  
oro claro  
**M5369NN**  
nichel nero *black nickel*  
niquel negro



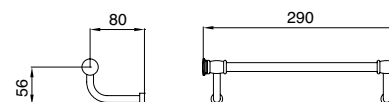
Struttura metallica per lavabo 5369  
con griglia  
*Metal stand with grid  
for washbasin 5369*  
Soporte metalico para lavabo 5369  
con grilla

**M5369GCR**  
cromo *chrome* / cromo  
**M5369GBR**  
bronzo *bronze* / bronce  
**M5369GNI**  
nichel *nickel* / niquel  
**M5369GOL**  
oro *light english gold*  
oro claro  
**M5369GNN**  
nichel nero *black nickel*  
niquel negro



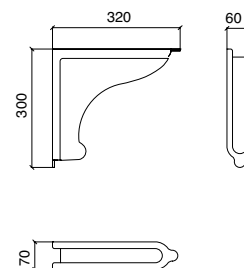
Portasalviette SX/DX  
per struttura metallica  
*Towel rail for metal stand*  
Toallero para soporte metalico

**1PCR**  
cromo *chrome* / cromo  
**1PBR**  
bronzo *bronze* / bronce  
**1PNI**  
nichel *nickel* / niquel  
**1POL**  
oro *light english gold*  
oro claro  
**1PNN**  
nichel nero *black nickel*  
niquel negro



Coppia di mensole ceramiche per lavabo  
5369 complete di staffe metalliche a L  
*Ceramic brackets  
for washbasin 5369 (pair)*  
Par de estantes en cerámica  
para lavabo 5369

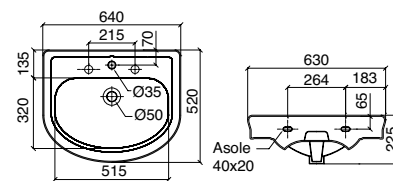
**5369M**  
bianco *white* / blanco





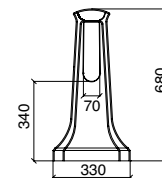
Lavabo con bordo paraspruzzi  
1-3 fori rubinetteria - 640mm  
*Washbasin with splash plate  
1-3 tap holes - 640mm*  
Lavabo 1-3 orificios - 640mm

5365/1  
bianco\_white\_blanco  
monoforo\_single tap hole  
\_un orificio  
5365/3  
bianco\_white\_blanco  
tre fori\_three tap holes  
\_tres orificios



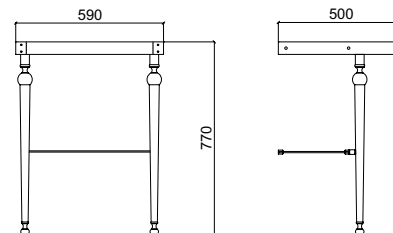
Colonna per lavabo  
*Pedestal for washbasin*  
Pedestal para lavabos

5771  
bianco\_white\_blanco



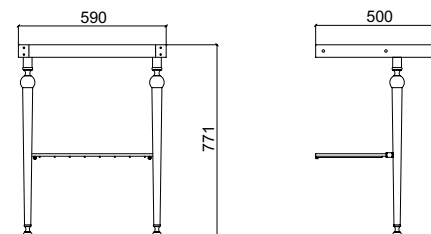
Struttura metallica per lavabo 5365  
con ripiano in vetro  
*Metal stand with glass shelf  
for washbasin 5365*  
Soporte metalico para lavabo 5365  
con estante en vidrio

M5365CR  
cromo\_chrome\_cromo  
M5365BR  
bronzo\_bronze\_bronce  
M5365NI  
nichel\_nickel\_niquel  
M5365OL  
oro\_light\_english\_gold  
oro claro  
M5365NN  
nichel nero\_black\_nickel  
niquel negro



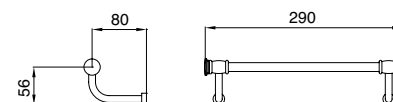
Struttura metallica per lavabo 5365  
con griglia  
*Metal stand with grid  
for washbasin 5365*  
Soporte metalico para lavabo 5365  
con grilla

M5365GCR  
cromo\_chrome\_cromo  
M5365GBR  
bronzo\_bronze\_bronce  
M5365GNI  
nichel\_nickel\_niquel  
M5365GOL  
oro\_light\_english\_gold  
oro claro  
M5365GNN  
nichel nero\_black\_nickel  
niquel negro



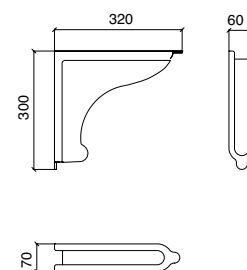
Portasalviette SX/DX  
per struttura metallica  
*Towel rail for metal stand*  
Toallero para soporte metalico

1PCR  
cromo\_chrome\_cromo  
1PBR  
bronzo\_bronze\_bronce  
1PNI  
nichel\_nickel\_niquel  
1POL  
oro\_light\_english\_gold  
oro claro  
1PNN  
nichel nero\_black\_nickel  
niquel negro



Coppia di mensole ceramiche per lavabo  
5365 complete di staffe metalliche a L  
*Ceramic brackets  
for washbasin 5365 (pair)*  
Par de estantes en cerámica  
para lavabo 5365

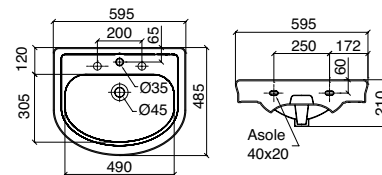
5365M  
bianco\_white\_blanco





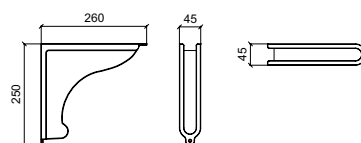
Lavabo con bordo paraspruzzi  
1-3 fori rubinetteria - 595mm  
*Washbasin with splash plate  
1-3 tap holes - 595mm*  
Lavabo 1-3 orificios - 595mm

**5359/1**  
bianco\_white\_blanco  
monoforo\_single tap hole  
\_un orificio  
**5359/3**  
bianco\_white\_blanco  
tre fori\_three tap holes  
\_tres orificios



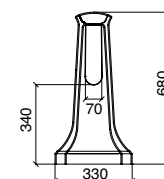
Coppia di mensole ceramiche  
per lavabo 5359  
*Ceramic brackets  
for washbasin 5359 (pair)*  
Par de estantes en cerámica  
para lavabo 5359

**5359M**  
bianco\_white\_blanco



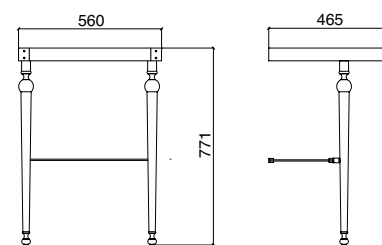
Colonna per lavabo  
*Pedestal for washbasin*  
Pedestal para lavabos

**5771**  
bianco\_white\_blanco



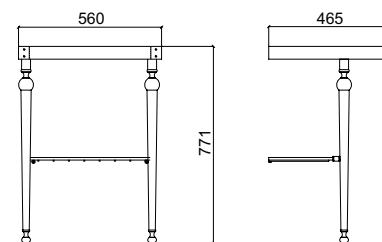
Struttura metallica per lavabo 5359  
con ripiano in vetro  
*Metal stand with glass shelf  
for washbasin 5359*  
Soporte metalico para lavabo 5359  
con estante en vidrio

**M5359CR**  
cromo\_chrome\_cromo  
**M5359BR**  
bronzo\_bronze\_bronce  
**M5359NI**  
nichel\_nickel\_niquel  
**M5359OL**  
oro light\_english gold  
oro claro  
**M5359NN**  
nichel nero\_black nickel  
niquel negro



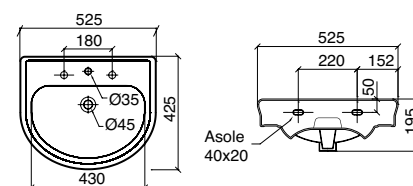
Struttura metallica per lavabo 5359  
con griglia  
*Metal stand with grid  
for washbasin 5359*  
Soporte metalico para lavabo 5359  
con grilla

**M5359GCR**  
cromo\_chrome\_cromo  
**M5359GBR**  
bronzo\_bronze\_bronce  
**M5359GNI**  
nichel\_nickel\_niquel  
**M5359GOL**  
oro light\_english gold  
oro claro  
**M5359GNN**  
nichel nero\_black nickel  
niquel negro



Lavabo 1-3 fori rubinetteria - 525mm  
*Washbasin 1-3 tap holes - 525mm*  
Lavabo 1-3 orificios - 525mm

**5352/1**  
bianco\_white\_blanco  
monoforo\_single tap hole  
\_un orificio  
**5352/3**  
bianco\_white\_blanco  
tre fori\_three tap holes  
\_tres orificios





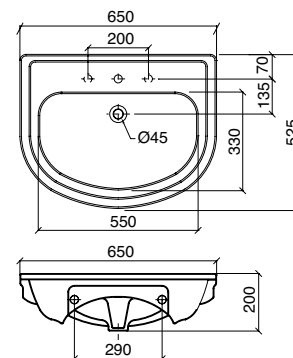
Lavabo semincasso  
1-3 fori rubinetteria - 640mm  
*Semi-recessed washbasin*  
*1-3 tap holes - 640mm*  
Lavabo semiencastre  
1-3 orificios - 640mm

5304/1

bianco\_white\_blanco  
monoforo\_single tap hole  
\_un orificio

5304/3

bianco\_white\_blanco  
tre fori\_three tap holes  
\_tres orificios



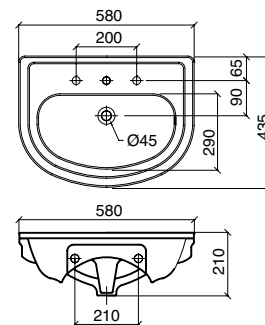
Lavabo semincasso  
1-3 fori rubinetteria - 580mm  
*Semi-recessed washbasin*  
*1-3 tap holes - 580mm*  
Lavabo semiencastre  
1-3 orificios - 580mm

5305/1

bianco\_white\_blanco  
monoforo\_single tap hole  
\_un orificio

5305/3

bianco\_white\_blanco  
tre fori\_three tap holes  
\_tres orificios



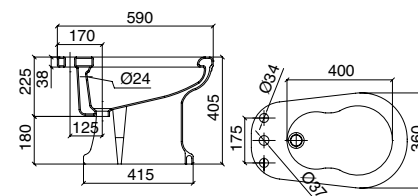
Bidet erogazione esterna/interna  
1-3 fori rubinetteria  
*Bidet with external/internal*  
*output 1-3 tap holes*  
Bidé con evacuación  
externa/interna 1-3 orificios para griferia

5506/1

bianco\_white\_blanco  
monoforo\_single tap hole  
\_un orificio

5506/3

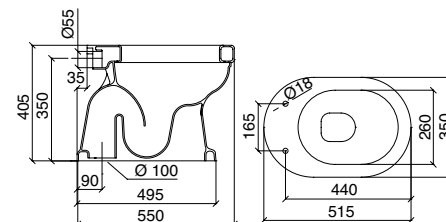
bianco\_white\_blanco  
tre fori\_three tap holes  
\_tres orificios



Vaso a brida grondante scarico terra  
*Low level pan with floor drain*  
Inodoro salida suelo

5520

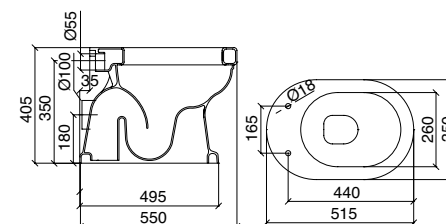
bianco\_white\_blanco



Vaso a brida grondante scarico parete  
*Low level pan with wall drain*  
Inodoro salida pared

5521

bianco\_white\_blanco

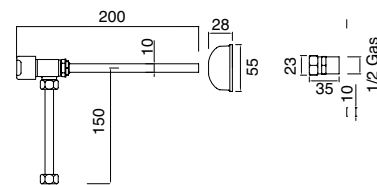


\*Si veda pag 173 per articolo accessorio  
raccordo ceramico  
\*See page 173 for complementary  
extended pan connector (ceramic)  
\*Ver pagina 173 para accesorio  
de unión ceramico



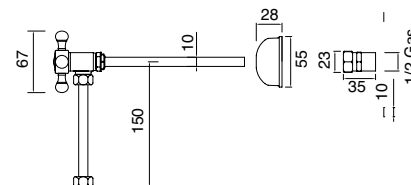
Rubinetto di adduzione acqua per cassette esterne in ceramica  
*Tap for external ceramic cisterns*  
 Grifo toma de agua para cisternas exteriores cerámicas

AT78CR  
 AT78ON  
 AT78BR  
 AT78NI  
 AT78OL  
 AT78NN



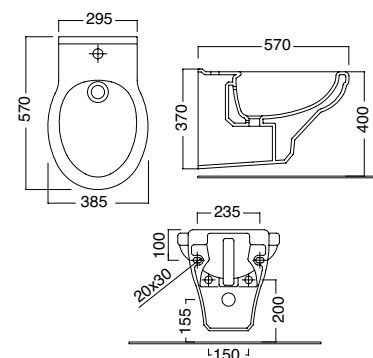
Rubinetto di adduzione acqua per cassette esterne in ceramica  
*Tap for external ceramic cisterns*  
 Grifo toma de agua para cisternas exteriores cerámicas

AT77CR  
 AT77ON  
 AT77BR  
 AT77NI  
 AT77OL  
 AT77NN



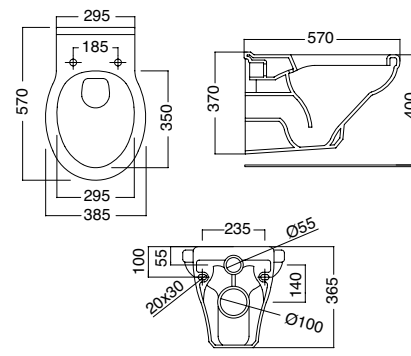
Bidet sospeso monoforo erogazione esterna  
*Wall hung bidet external output single hole*  
 Bidé suspendido con evacuación externa 1 orificio

5398  
 bianco\_ white\_ blanco



Vaso sospeso a brida grondante  
*Wall hung pan*  
 Inodoro suspendido

5324  
 bianco\_ white\_ blanco



Sostegno universale vaso / bidet sospesi  
*Universal stand for wall hung pan/bidet*  
 Bastidor universal para inodoro y bidé suspendidos

0002



Kit fissaggi per sanitari  
*Kit for toilet fittings*  
 Kit fijación inodoros

SBKITWC



Kit fissaggi lavabo  
*Kit for washbasin fittings*  
 Kit fijación lavabos

SBKITLA





| SEDILI                        | SEATS                          | ASIENTOS                      | Cod.      |
|-------------------------------|--------------------------------|-------------------------------|-----------|
| Sedile bianco                 | White seat                     | Asiento blanco                |           |
| Cerniere cromo                | Chrome hinges                  | Bisagras cromo                | S520CR    |
| Cerniere oro light            | English gold hinges            | Bisagras oro claro            | S520OL    |
| Cerniere bronzo               | Bronze hinges                  | Bisagras bronce               | S520BR    |
| Cerniere nichel               | Nickel hinges                  | Bisagras niquel               | S520NI    |
| Cerniere ottone naturale      | Brass hinges                   | Bisagras latón natural        | S520ON    |
| Cerniere nichel nero          | Black nickel hinges            | Bisagras niquel nero          | S520NN    |
| Cerniere rallentata cromo     | Soft_close hinges chrome       | Bisagras soft-close crome     | S520csCR  |
| Cerniere rallentata oro light | Soft_close hinges English gold | Bisagras soft-close oro claro | S520csOL  |
| Cerniere rallentata bronzo    | Soft_close hinges bronze       | Bisagras soft-close bronce    | S520csSBR |
| Cerniere rallentata nichel    | Soft_close hinges nickel       | Bisagras soft-close niquel    | S520csNI  |



|                               |                                |                               |          |
|-------------------------------|--------------------------------|-------------------------------|----------|
| Sedile faggio tinto noce      | Walnut stained beech seat      | Asiento haya tinta nuez       |          |
| Cerniere cromo                | Chrome hinges                  | Bisagras cromo                | S530CR   |
| Cerniere oro light            | English gold hinges            | Bisagras oro claro            | S530OL   |
| Cerniere bronzo               | Bronze hinges                  | Bisagras bronce               | S530BR   |
| Cerniere nichel               | Nickel hinges                  | Bisagras niquel               | S530NI   |
| Cerniere ottone naturale      | Brass hinges                   | Bisagras latón natural        | S530ON   |
| Cerniere nichel nero          | Black nickel hinges            | Bisagras niquel nero          | S530NN   |
| Cerniere rallentata cromo     | Soft_close hinges chrome       | Bisagras soft-close crome     | S530csCR |
| Cerniere rallentata oro light | Soft_close hinges English gold | Bisagras soft-close oro claro | S530csOL |
| Cerniere rallentata bronzo    | Soft_close hinges bronze       | Bisagras soft-close bronce    | S530csBR |
| Cerniere rallentata nichel    | Soft_close hinges nickel       | Bisagras soft-close niquel    | S530csNI |



|                               |                                |                               |          |
|-------------------------------|--------------------------------|-------------------------------|----------|
| Sedile Nero opaco             | Satin black seat               | Asiento negro mate            |          |
| Cerniere cromo                | Chrome hinges                  | Bisagras cromo                | S536CR   |
| Cerniere oro light            | English gold hinges            | Bisagras oro claro            | S536OL   |
| Cerniere bronzo               | Bronze hinges                  | Bisagras bronce               | S536BR   |
| Cerniere nichel               | Nickel hinges                  | Bisagras niquel               | S536NI   |
| Cerniere ottone naturale      | Brass hinges                   | Bisagras latón natural        | S536ON   |
| Cerniere nichel nero          | Black nickel hinges            | Bisagras niquel nero          | S536NN   |
| Cerniere rallentata cromo     | Soft_close hinges chrome       | Bisagras soft-close crome     | S536csCR |
| Cerniere rallentata oro light | Soft_close hinges English gold | Bisagras soft-close oro claro | S536csOL |
| Cerniere rallentata bronzo    | Soft_close hinges bronze       | Bisagras soft-close bronce    | S536csBR |
| Cerniere rallentata nichel    | Soft_close hinges nickel       | Bisagras soft-close niquel    | S536csNI |



|                               |                                |                               |          |
|-------------------------------|--------------------------------|-------------------------------|----------|
| Sedile Nero Lucido            | Shiny black seat               | Asiento negro brillante       |          |
| Cerniere cromo                | Chrome hinges                  | Bisagras cromo                | S539CR   |
| Cerniere oro light            | English gold hinges            | Bisagras oro claro            | S539OL   |
| Cerniere bronzo               | Bronze hinges                  | Bisagras bronce               | S539BR   |
| Cerniere nichel               | Nickel hinges                  | Bisagras niquel               | S539NI   |
| Cerniere ottone naturale      | Brass hinges                   | Bisagras latón natural        | S539ON   |
| Cerniere nichel nero          | Black nickel hinges            | Bisagras niquel nero          | S539NN   |
| Cerniere rallentata cromo     | Soft_close hinges chrome       | Bisagras soft-close crome     | S539csCR |
| Cerniere rallentata oro light | Soft_close hinges English gold | Bisagras soft-close oro claro | S539csOL |
| Cerniere rallentata bronzo    | Soft_close hinges bronze       | Bisagras soft-close bronce    | S539csBR |
| Cerniere rallentata nichel    | Soft_close hinges nickel       | Bisagras soft-close niquel    | S539csNI |



|                               |                                |                               |          |
|-------------------------------|--------------------------------|-------------------------------|----------|
| Sedile faggio tinto ciliegio  | Cherry stained beech seat      | Asiento haya tinta cerezo     |          |
| Cerniere cromo                | Chrome hinges                  | Bisagras cromo                | S544CR   |
| Cerniere oro light            | English gold hinges            | Bisagras oro claro            | S544OL   |
| Cerniere bronzo               | Bronze hinges                  | Bisagras bronce               | S544BR   |
| Cerniere nichel               | Nickel hinges                  | Bisagras niquel               | S544NI   |
| Cerniere ottone naturale      | Brass hinges                   | Bisagras latón natural        | S544ON   |
| Cerniere nichel nero          | Black nickel hinges            | Bisagras niquel nero          | S544NN   |
| Cerniere rallentata cromo     | Soft_close hinges chrome       | Bisagras soft-close crome     | S544csCR |
| Cerniere rallentata oro light | Soft_close hinges English gold | Bisagras soft-close oro claro | S544csOL |
| Cerniere rallentata bronzo    | Soft_close hinges bronze       | Bisagras soft-close bronce    | S544csBR |
| Cerniere rallentata nichel    | Soft_close hinges nickel       | Bisagras soft-close niquel    | S544csNI |



|                               |                                |                               |          |
|-------------------------------|--------------------------------|-------------------------------|----------|
| Sedile frassino tinto mogano  | Mahogany stained ash seat      | Asiento ceniza tinta caoba    |          |
| Cerniere cromo                | Chrome hinges                  | Bisagras cromo                | S549CR   |
| Cerniere oro light            | English gold hinges            | Bisagras oro claro            | S549OL   |
| Cerniere bronzo               | Bronze hinges                  | Bisagras bronce               | S549BR   |
| Cerniere nichel               | Nickel hinges                  | Bisagras niquel               | S549NI   |
| Cerniere ottone naturale      | Brass hinges                   | Bisagras latón natural        | S549ON   |
| Cerniere nichel nero          | Black nickel hinges            | Bisagras niquel nero          | S549NN   |
| Cerniere rallentata cromo     | Soft_close hinges chrome       | Bisagras soft-close crome     | S549csCR |
| Cerniere rallentata oro light | Soft_close hinges English gold | Bisagras soft-close oro claro | S549csOL |
| Cerniere rallentata bronzo    | Soft_close hinges bronze       | Bisagras soft-close bronce    | S549csBR |
| Cerniere rallentata nichel    | Soft_close hinges nickel       | Bisagras soft-close niquel    | S549csNI |



**SEDILI**

Sedile bianco

- Cerniere cromo
- Cerniere oro light
- Cerniere bronzo
- Cerniere nichel
- Cerniere ottone naturale
- Cerniere nichel nero
- Cerniere rallentata cromo
- Cerniere rallentata oro light
- Cerniere rallentata bronzo
- Cerniere rallentata nichel

**SEATS**

White seat

- Chrome hinges
- English gold hinges
- Bronze hinges
- Nickel hinges
- Brass hinges
- Black nickel hinges
- Soft\_close hinges chrome
- Soft\_close hinges English gold
- Soft\_close hinges bronze
- Soft\_close hinges nickel

**ASIENTOS**

Asiento blanco

- Bisagras cromo
- Bisagras oro claro
- Bisagras bronze
- Bisagras niquel
- Bisagras latón natural
- Bisagras niquel nero
- Bisagras soft-close crome
- Bisagras soft-close oro claro
- Bisagras soft-close bronze
- Bisagras soft-close niquel

Cod.

- S324CR
- S324OL
- S324BR
- S324NI
- S324ON
- S324NN
- S324csCR
- S324csOL
- S324csBR
- S324csNI



Sedile faggio tinto noce

- Cerniere cromo
- Cerniere oro light
- Cerniere bronzo
- Cerniere nichel
- Cerniere ottone naturale
- Cerniere nichel nero
- Cerniere rallentata cromo
- Cerniere rallentata oro light
- Cerniere rallentata bronzo
- Cerniere rallentata nichel

Walnut stained beech seat

- Chrome hinges
- English gold hinges
- Bronze hinges
- Nickel hinges
- Brass hinges
- Black nickel hinges
- Soft\_close hinges chrome
- Soft\_close hinges English gold
- Soft\_close hinges bronze
- Soft\_close hinges nickel

Asiento haya tinta nuez

- Bisagras cromo
- Bisagras oro claro
- Bisagras bronze
- Bisagras niquel
- Bisagras latón natural
- Bisagras niquel nero
- Bisagras soft-close crome
- Bisagras soft-close oro claro
- Bisagras soft-close bronze
- Bisagras soft-close niquel

- S330CR
- S330OL
- S330BR
- S330NI
- S330ON
- S330NN
- S330csCR
- S330csOL
- S330csBR
- S330csNI



Sedile Nero opaco

- Cerniere cromo
- Cerniere oro light
- Cerniere bronzo
- Cerniere nichel
- Cerniere ottone naturale
- Cerniere nichel nero
- Cerniere rallentata cromo
- Cerniere rallentata oro light
- Cerniere rallentata bronzo
- Cerniere rallentata nichel

Satin black seat

- Chrome hinges
- English gold hinges
- Bronze hinges
- Nickel hinges
- Brass hinges
- Black nickel hinges
- Soft\_close hinges chrome
- Soft\_close hinges English gold
- Soft\_close hinges bronze
- Soft\_close hinges nickel

Asiento negro mate

- Bisagras cromo
- Bisagras oro claro
- Bisagras bronze
- Bisagras niquel
- Bisagras latón natural
- Bisagras niquel nero
- Bisagras soft-close crome
- Bisagras soft-close oro claro
- Bisagras soft-close bronze
- Bisagras soft-close niquel

- S336CR
- S336OL
- S336BR
- S336NI
- S336ON
- S336NN
- S336csCR
- S336csOL
- S336csBR
- S336csNI



Sedile Nero Lucido

- Cerniere cromo
- Cerniere oro light
- Cerniere bronzo
- Cerniere nichel
- Cerniere ottone naturale
- Cerniere nichel nero
- Cerniere rallentata cromo
- Cerniere rallentata oro light
- Cerniere rallentata bronzo
- Cerniere rallentata nichel

Shiny black seat

- Chrome hinges
- English gold hinges
- Bronze hinges
- Nickel hinges
- Brass hinges
- Black nickel hinges
- Soft\_close hinges chrome
- Soft\_close hinges English gold
- Soft\_close hinges bronze
- Soft\_close hinges nickel

Asiento negro brillante

- Bisagras cromo
- Bisagras oro claro
- Bisagras bronze
- Bisagras niquel
- Bisagras latón natural
- Bisagras niquel nero
- Bisagras soft-close crome
- Bisagras soft-close oro claro
- Bisagras soft-close bronze
- Bisagras soft-close niquel

- S342CR
- S342OL
- S342BR
- S342NI
- S342ON
- S342NN
- S342csCR
- S342csOL
- S342csBR
- S342csNI



Sedile faggio tinto ciliegio

- Cerniere cromo
- Cerniere oro light
- Cerniere bronzo
- Cerniere nichel
- Cerniere ottone naturale
- Cerniere nichel nero
- Cerniere rallentata cromo
- Cerniere rallentata oro light
- Cerniere rallentata bronzo
- Cerniere rallentata nichel

Cherry stained beech seat

- Chrome hinges
- English gold hinges
- Bronze hinges
- Nickel hinges
- Brass hinges
- Black nickel hinges
- Soft\_close hinges chrome
- Soft\_close hinges English gold
- Soft\_close hinges bronze
- Soft\_close hinges nickel

Asiento haya tinta cerezo

- Bisagras cromo
- Bisagras oro claro
- Bisagras bronze
- Bisagras niquel
- Bisagras latón natural
- Bisagras niquel nero
- Bisagras soft-close crome
- Bisagras soft-close oro claro
- Bisagras soft-close bronze
- Bisagras soft-close niquel

- S348CR
- S348OL
- S348BR
- S348NI
- S348ON
- S348NN
- S348csCR
- S348csOL
- S348csBR
- S348csNI



Sedile frassino tinto mogano

- Cerniere cromo
- Cerniere oro light
- Cerniere bronzo
- Cerniere nichel
- Cerniere ottone naturale
- Cerniere nichel nero
- Cerniere rallentata cromo
- Cerniere rallentata oro light
- Cerniere rallentata bronzo
- Cerniere rallentata nichel

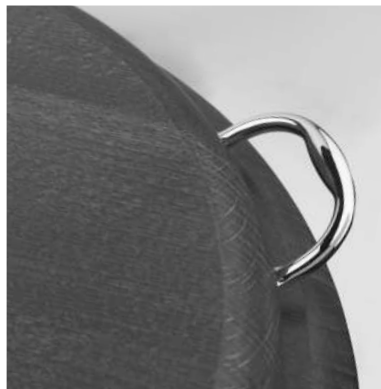
Mahogany stained ash seat

- Chrome hinges
- English gold hinges
- Bronze hinges
- Nickel hinges
- Brass hinges
- Black nickel hinges
- Soft\_close hinges chrome
- Soft\_close hinges English gold
- Soft\_close hinges bronze
- Soft\_close hinges nickel

Asiento ceniza tinta caoba

- Bisagras cromo
- Bisagras oro claro
- Bisagras bronze
- Bisagras niquel
- Bisagras latón natural
- Bisagras niquel nero
- Bisagras soft-close crome
- Bisagras soft-close oro claro
- Bisagras soft-close bronze
- Bisagras soft-close niquel

- S354CR
- S354OL
- S354BR
- S354NI
- S354ON
- S354NN
- S354csCR
- S354csOL
- S354csBR
- S354csNI



Alza coperchio sedili compatibile con qualsiasi sedile Sbordoni  
*Toilet seat handle compatible with all Sbordoni seats*  
 Manija para asiento compatible con todos los modelos Sbordoni

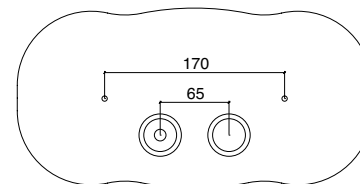
SBMANSEDCR  
 SBMANSEDON  
 SBMANSEDBR  
 SBMANSEDNI  
 SBMANSEDOL  
 SBMANSEDNN

P L A C C H E *\_flush plate*



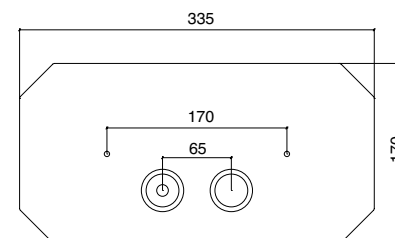
Placca di comando per cassetta Geberit tipo UNICA, KOMBIFIX, UP300, UP320 o simili  
*Push button flush plate for Geberit recessed cisterns types Unica, Kombifix, UP300, UP320 or similar*  
 Placa de comando para cisternas empotradas Geberit Unica, Kombifix, UP300, UP320, Sigma, Omega o similares

SB070CR  
 SB070ON  
 SB070BR  
 SB070NI  
 SB070OL  
 SB070NN



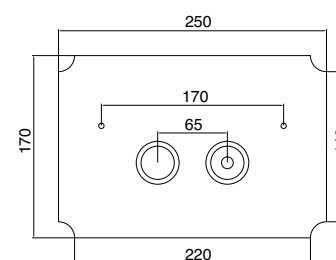
Placca di comando per cassetta Geberit tipo UNICA, KOMBIFIX, UP300, UP320 o simili  
*Push button flush plate for Geberit recessed cisterns types Unica, Kombifix, UP300, UP320 or similar*  
 Placa de comando para cisternas empotradas Geberit Unica, Kombifix, UP300, UP320, Sigma, Omega o similares

SB071CR  
 SB071ON  
 SB071BR  
 SB071NI  
 SB071OL  
 SB071NN



Placca di comando per cassetta Geberit tipo UNICA, KOMBIFIX, UP300, UP320 o simili  
*Push button flush plate for Geberit recessed cisterns types Unica, Kombifix, UP300, UP320 or similar*  
 Placa de comando para cisternas empotradas Geberit Unica, Kombifix, UP300, UP320, Sigma, Omega o similares

SB073CR  
 SB073ON  
 SB073BR  
 SB073NI  
 SB073OL  
 SB073NN





PROUDLY MADE IN ITALY

Sanitosco1984 srl \_ Via Signorelli, 11/9 50028 Tavarnelle Val di Pesa \_ Florence \_ Italy  
Tel +39 055 8071159/8071190 \_ Fax -39 055 8071185  
[www.sbordoniceramica.com](http://www.sbordoniceramica.com)

Le immagini ed i dati contenuti nel presente listino sono da ritenersi indicativi e possono subire variazioni anche senza alcun preavviso  
Images and data contained in this price list are to be considered indicative and may be changed also without any notice